



Documentation and Features for www.centralpanhandlemls.com

For website support, contact:

Phone: (850)763-8078

Email: mlssupport@cpaor.org or mlsdirector@cpaor.org

Table of Contents

List of Working URLs	2
Main Page	2
Searching	5
Main Menu Options	
Find a Home	6
Find a Pro	7

List of working URLs

www.centralpanhandlemls.com is the primary URL, but the following URLs will also redirect there:

- cparms.com
- panamacitymls.com
- baycountyrealtors.net
- baycountyrealtors.org
- centralpanhandleassociationofrealtors.com
- baycountyassociationofrealtors.com
- panamacityrealtors.com
- panamacityrealtors.net
- panamacityrealtors.org
- cpaor.biz
- cpaor.us
- cpar.biz
- bcaor.com
- bcaor.net

Also, www.cpaor.org links directly to the member page and www.cpaor.info still links to the member portal.

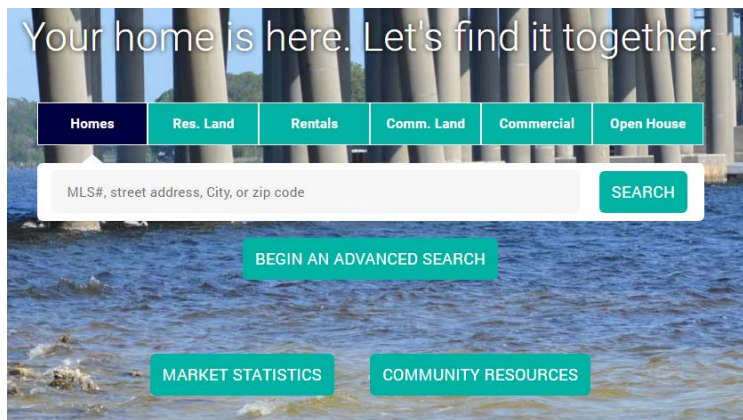
Main Page

Across the top is the menu bar, below is a map of the different drop downs that are available. We will cover these pages individually later. Also note the Member button on the right side which will bring you to the member page.

Here is an image depicting what is available under each drop down:

Find a Home	Find a Pro	Membership	Professional Standards	About Us
Find A Home	Find a REALTOR®	Join CPAR		Contact Us
Advanced Property Search	Find a Brokerage	Member Benefits		About CPAR
Market Statistics	Find an Affiliate	Membership Types		Association Staff
Open Houses		Become a Power Partner		Board of Directors
County Property Resources		Leadership Academy		Committees
Community Resources				Past Presidents
				Events
				Florida Realtors
				NAR
				Legal Notices

- Below that you have our **Search Area** (to be covered in the next section), as well as buttons that take you to the latest Market Statistics report or Community Resources page.



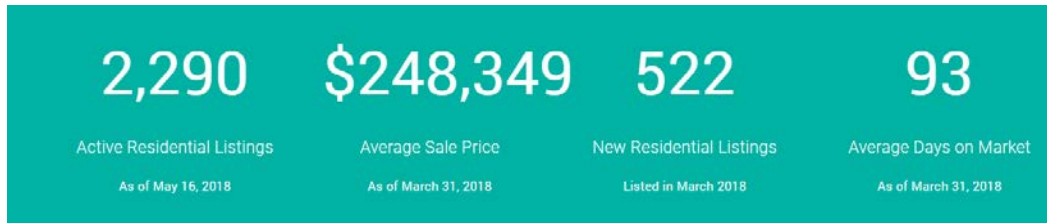
- Below that are **Quick Links for Consumers** to find information on Finding a REALTOR, Finding a Brokerage, Why Use REALTORS, and Become a REALTOR. Each of these link to other pages that we will cover later, but are linked here for consumers to be able to find them quickly and easily.

Central Panhandle Association of REALTORS®

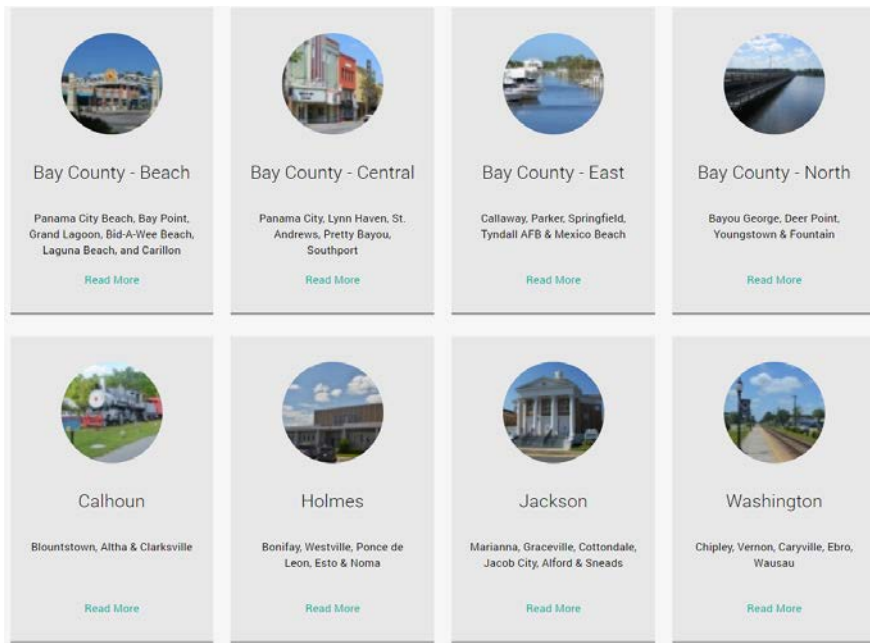
Central Panhandle Association of REALTORS® represents REALTOR® Brokers and Agents in Bay, Washington, Calhoun, Holmes, and Jackson counties, covering the Centre Panhandle from the Gulf of Mexico to the Alabama border. We are the Voice for Real Estate in Northwest Florida and provide real estate resources, services, tools, and education to our members and the public.

			
Find a REALTOR®	Find a Brokerage	Why use REALTORS®?	Become a REALTOR®
CLICK HERE	CLICK HERE	CLICK HERE	CLICK HERE

- Next there is a section for Power Partners to be able to purchase **Advertising**. This section will remain thin as to keep it from being too distracting.
- Next there is a section with **Quick Market Statistics** that will be updated once a month.

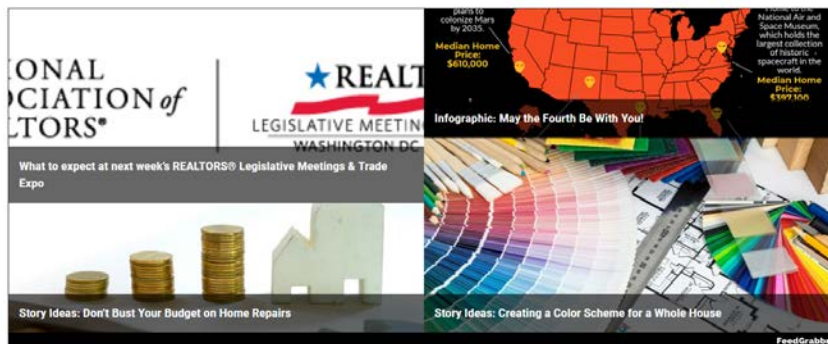


- Then we get to our **Counties** section. Each Area has its own page, with information, links, and pictures from that area. It also has nearby listings and a listing map showing the available listings.



- Following that is a section for **NAR News**. Click on the story you want to read to be directed to the story on NAR's Newsline website.

National Association of REALTORS® News



- Next there is a scrolling bar of all of our **Power Partners**. Clicking on their logo will bring you to their website (if they have provided one). You can click on the arrows to scroll forwards or backwards.

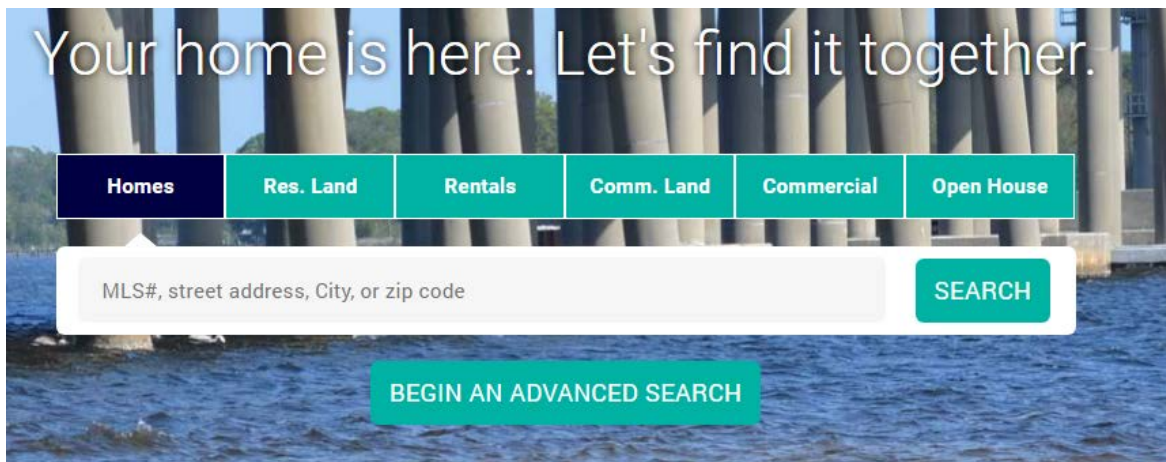


- Finally, at the bottom of the page (and every other page) is the site footer, which gives you quick links to anywhere else on the site.



Searching

At the top of the front page you have our main search, with photos cycling behind it showcasing many different areas that CPAR covers.



- To search here, click on the button across the top that has the property type you would like to search for, then you can search by MLS#, street address, city, or zip code and click **Search**.
- Alternatively, if you would like to do an Advanced Search, you can click the property type you want to do an Advanced Search for, then click **“Begin an Advanced Search.”**
- From the main page, you can also search for **Open Houses** by clicking on “Open House” and choosing a date, then click Search.

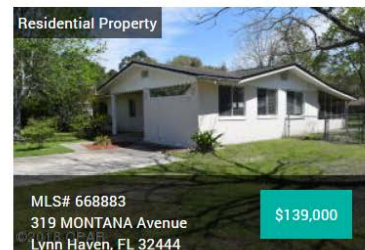
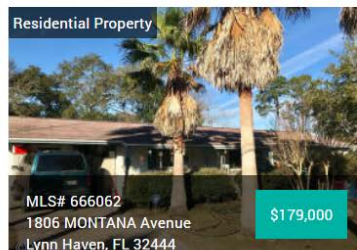
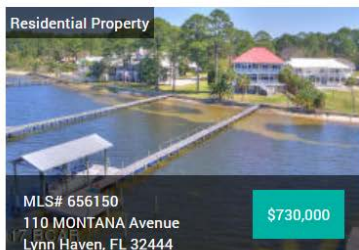
The listings will come up for you on a page that looks like this:

Residential Properties

Sort by price: **LOW TO HIGH**

List Map

Items 1-4 of 4



- From here, you can click the button in the top right to change the sort to **Low to High**, or click Map to see the listings on a Map. Otherwise, click on the listing you choose.

Main Menu Options - Find a Home

ADVANCED PROPERTY SEARCH

When doing an Advanced search, you have the following options:

MLS#	Apx SqFt (Htd/Cooled)	City	Listing in the last ____ days
Price Range	Acreage	County	
Year Built	Street#	Community/Resort	
Min. Bedrooms	Street	Waterfront Type	
Min. Bathrooms	Area	Water View	

The Advanced Search page also includes a color-coded map that shows the areas to make it clearer to understand for those outside of the area.

MARKET STATISTICS

Shows you the PDF of the latest market statistics from FAR



Summary Statistics	March 2018	March 2017	Percent Change Year-over-Year
Closed Sales	377	366	3.0%
Paid in Cash	91	99	-8.1%
Median Sale Price	\$210,000	\$184,950	13.5%

OPEN HOUSES

When you first click on this, it will just bring up all of the open houses ordered from the soonest to the latest. But in the top right corner you can click on “Filter” if you want to narrow down the options a little more.

[View All](#) | [Filter](#) | [Print](#)

COUNTY PROPERTY RESOURCES

This page lists the Property Appraiser, Tax Estimator, Clerk of Court, Maps, and Tax Collector information for each county.

COMMUNITY RESOURCES

This page lists various city and county websites related to government, chambers, schools, economic development, and tourism.

Main Menu Options - Find a Pro

FIND A REALTOR / FIND A BROKERAGE / FIND AN AFFILIATE

This page allows consumers to find any of our REALTOR members. The information here is pulled directly from what the member has in Flex, including the member’s photo. Photo’s with a vertical orientation will appear best. You can search by Name, City, State, Zip, or you can click the Letters to pull members up by last name beginning with that letter.

Brokerage and Affiliate pages do not include the Photos/Logos, because there is no way for Offices and Affiliates to manager their photos via FlexMLS, where all of this information is pulled from.

Affiliates will eventually have the option to be sorted by Category – Appraisers, Insurance, Lenders, etc.